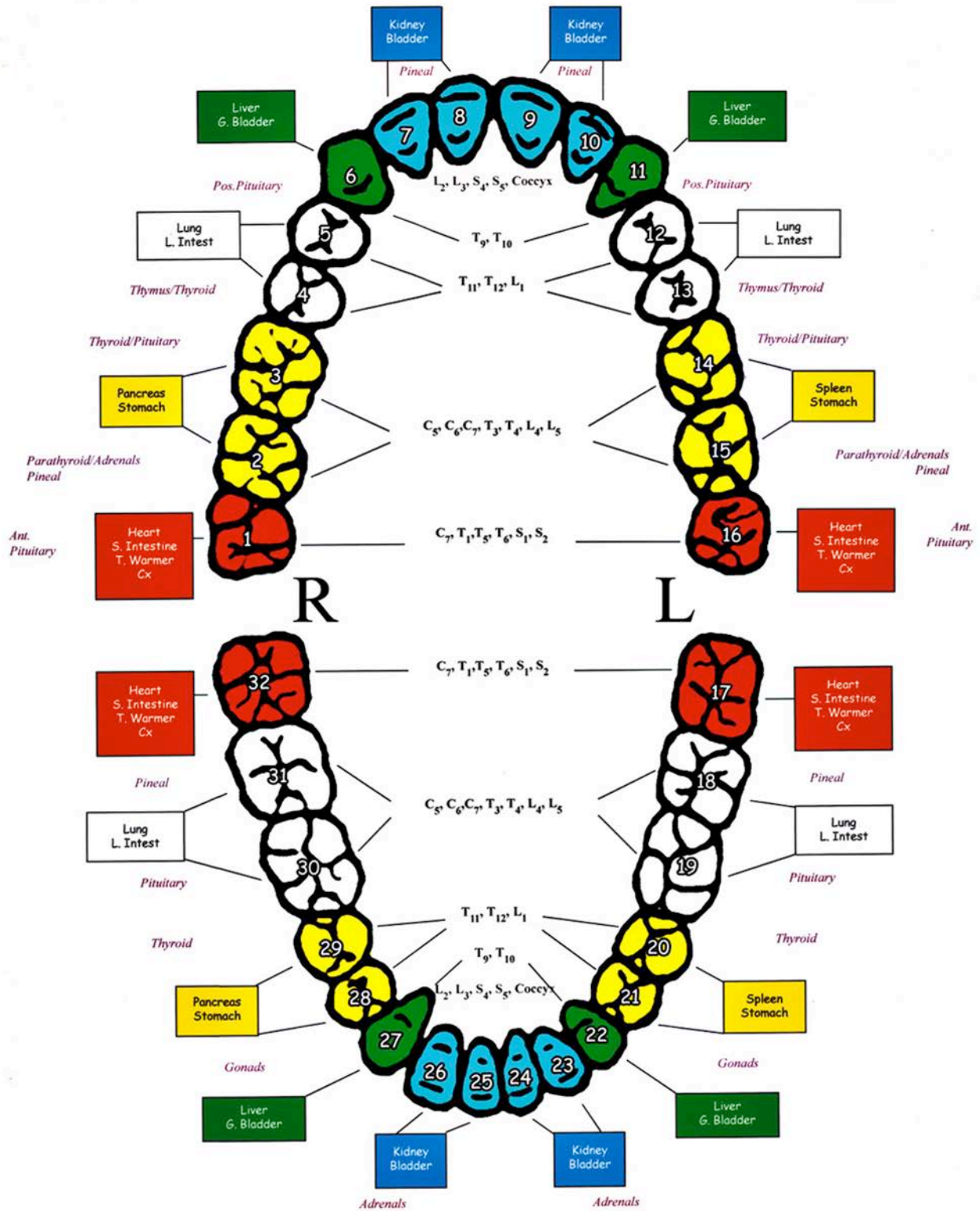


EMPIRICAL RELATIONSHIP BETWEEN TEETH AND BODY ORGANS – CHART



TEETH - ORGANS	Positive Emotions	Negative Emotions
1 - Third Molar (top right) (Wisdom tooth) Heart, Duodenum	Joy Love Compassion	Rejection Resentment Family Problems
2 - Second Molar (top right) ORGANS Pancreas Stomach Bladder	Self-Esteem Order Security	Low Self-Esteem Depression Guilt Judgmental
3 - First Molar (top right) Liver, Kidneys Pancreas, Stomach	Determination Resolution Caring Humor	Anger Inflexibility Pride Disrespectful
4 - Second Premolar (top right) Right Lung, Large Intestine Small Intestine, Gall Bladder, Duodenum	Passion Determination Balance Ego	Monotony Possessiveness Revenge Critical
5 - First Premolar (top right) ORGANS Right Lung, Pancreas Large Intestine, Stomach	Excitement Purpose Self-Esteem Affection	Grief Condemnation Intolerance Love Pain
6 - Canine (top right) ORGAN Liver, Heart, Gall Bladder	Decisiveness Compassion Joy Pride	Anger Regret Family Problems Rejection
7 - Second Incisor (top right) ORGANS Right Kidney, Bladder, Urogenital	Caring Intimacy Order	Inflexibility Ego Problems Disorganized Aloof
8 - First Incisor (top right) ORGANS Right Kidney, Bladder, Urogenital	Clarity Acceptance Survival	Disrespect Emotional Outbursts Stubbornness
9 - First Incisor (top left) ORGANS Left Kidney, Bladder, Urogenital	Acceptance Intimacy Order	Inflexibility Ego Problems Survival Fear
10 - Second Incisor (top left) ORGANS Left Kidney, Bladder, Urogenital	Comforting Survival Closeness	Prideful Stubbornness Repression Avoidance of Intimacy

11 - Canine (top left) Liver, Heart, Bile Ducts	Resolution Purpose, Love Approval	Anger, Regret Sadness Resentment Critical
12 - First Premolar (top left) Left Lung, Liver, Pancreas Large Intestine, Stomach	Excitement Decisiveness Judgment Happiness	Grief Controlling Monotony Depression Spite
13 - Second Premolar (top left) Left Lung, Liver, Large Intestine Small Intestine, Gall Bladder, Duodenum	Enthusiasm Determination Balance Assimilation	Intolerance Negativity Fear Uneasiness Anti-social
14 - First Molar (top left) Liver, Kidneys, Spleen Stomach	Purpose Comforting Peace Affection	Self-Condemnation Regret Price Rejection Agitation
15 - Second Molar (top left) Spleen, Stomach, Bladder	Self-Love Calmness Security Closeness	Antagonism Emotional Conflict Lack of Self-love
16 - Third Molar (top left) (Wisdom tooth) Heart, Jejunum, Ileum	Compassion Joy Love	Avoidance Resentment Rejection
17 - Third Molar (bottom left) (Wisdom tooth) Heart, Liver, Jejunum	Joy Love Resolution Purpose	Depression Family Problems Guilt Regret
18 - Second Molar (bottom left) Pancreas Stomach Bladder	Passion Excitement Assimilation	Anger Grief Manipulative Self-centered
19 - First Molar (bottom left) Lung Large Intestine	Enthusiasm Balance Zest	Love Pain Controlling Revenge Over Critical
20 - Second Premolar (bottom left) Spleen Stomach	Peace Happiness Calmness	Condemnation Restless Agitation Emotional Conflicts

21 - First Premolar (bottom left) Spleen, Liver, Pancreas, Stomach	Self Love Enthusiasm Humor Security	Anger Lack of Self-love Resentment Regret
22 - Canine (bottom left) Liver, Lungs, Pancreas, Bile Ducts	Resolution Excitement Judgment	Resentment Disorganized Lack of Acceptance Over-bearing
23 - Second Incisor (bottom left) Left Kidney, Bladder Urogenital	Comforting Closeness Caring Order	Repression Pride Unhappy Sexual Feelings
24 - First Incisor (bottom right) Left Kidney, Bladder, Urogenital	Acceptance Intimacy Order	Inflexibility Anger Emotional Outbursts
25 - First Incisor (bottom right) Right Kidney, Bladder Urogenital	Clarity Acceptance Survival	Disrespect Stubbornness Sexual Problems
26 - Second Incisor (bottom right) Right Kidney, Bladder, Urogenital	Caring Intimacy Order	Disorganized Inflexible Disharmony
27 - Canine (bottom right) Liver, Lungs, Pancreas Gall Bladder	Judgment, Pride Decisiveness Compassion, Joy	Anger Regret Grief Condemnation Family Problems
28 - First Premolar (bottom right) Pancreas, Liver Stomach, Pylorus	Purpose Self-Esteem Affection	Judgmental, Insecurity Low Self-esteem Regretful
29 - Second Premolar (bottom right) Right Lung, Liver, Large Intestine Small Intestine, Gall Bladder, Duodenum	Passion Determination Balance Ego	Controlling Revenge, Unforgiving Manipulative Unyielding
30 - First Molar (bottom right) Large Intestine Ileocecal Region	Passion Balance Zest	Anti-social Pessimistic Grief Fear of the Future
31 - Second Molar (bottom right) Lung Large Intestine Ileocecal Region	Excitement Balance Passion	Depression Guilt Lack of Acceptance Negativity

32 - Third Molar (bottom right) (Wisdom tooth) Heart Ileum Ileocecal Region	Joy Love Compassion Approval	Family Problems Resentment Avoidance

Dr. Elmira Gadol - DMD

Holistic Dentistry
277 West End Ave #1C
New York, NY 10023
Phone: 212-501-7177
Fax: 646-657-0699
<http://www.elmiragadol.com/>

Sources:

Empirical Relationships Between Teeth, Organs, Disease Chart
Compiled by Thomas Rau, M.D.
Paracelsus Clinic, Lustmuhle, Switzerland